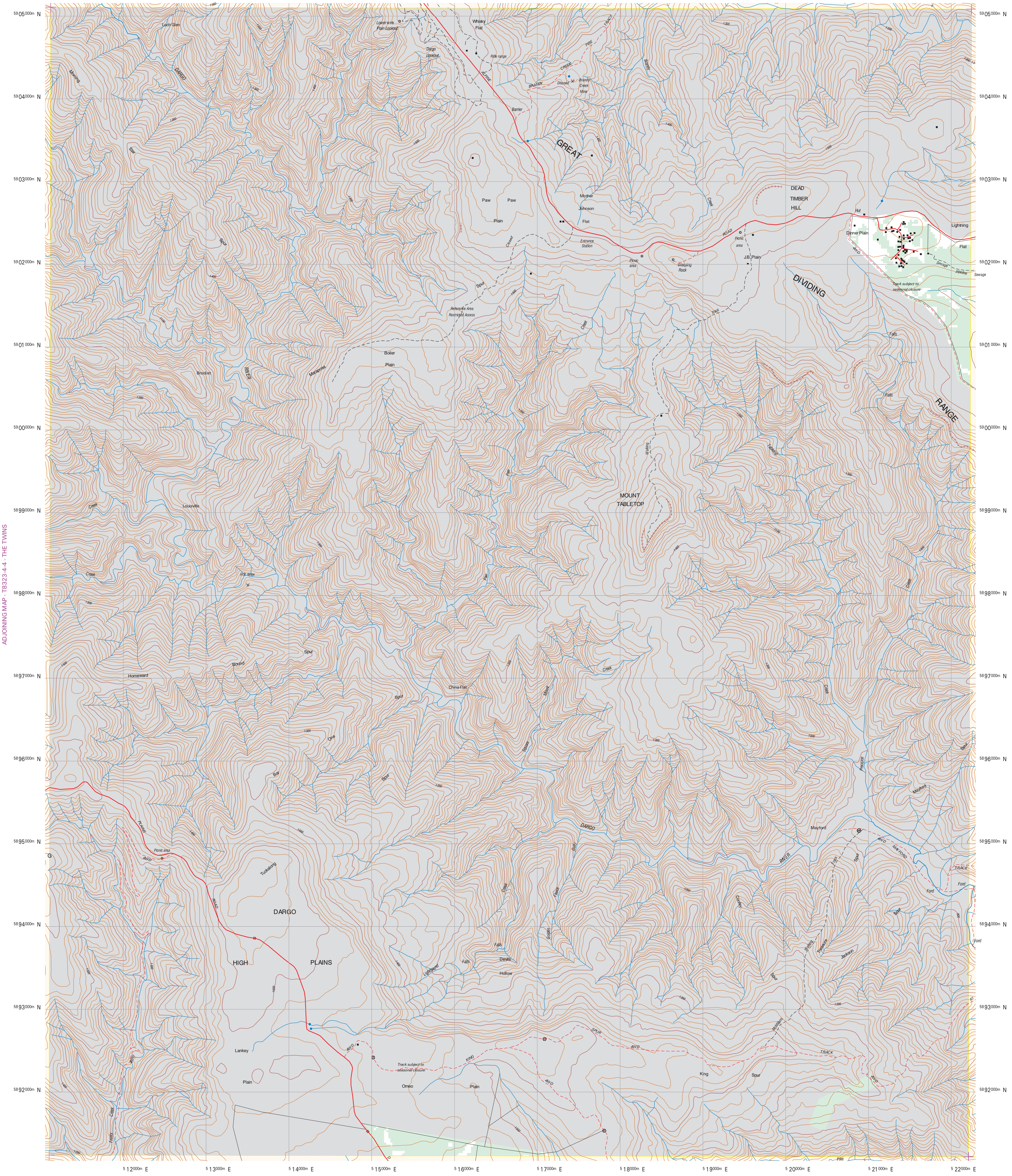


+ LAT. (LONG. OF 1:25000 MAPSHEET CORNER 147° 7' 00" 36° 60' 00"

ADJOINING MAP - T8324-3-2 - FEATHERTOP

+ LAT. (LONG. OF THE 1:25000 MAPSHEET CORNER 147° 15' 00" 36° 60' 00"



ADJOINING MAP - T8323-4-4 - THE TWINS

ADJOINING MAP - T8323-1-4 - THE DODDORA

+ LAT. (LONG. OF 1:25000 MAPSHEET CORNER 147° 7' 00" 37° 8' 00"

ADJOINING MAP - T8323-4-2 - GOW PLAIN

+ LAT. (LONG. OF THE 1:25000 MAPSHEET CORNER 147° 7' 00" 37° 8' 00"

MAP CREATED BY FIRE MANAGEMENT BRANCH FROM NRE AND OTHER DATA.
 This map has been produced automatically using DNRE Corporate Geospatial Library data.
 Before using this map refer to file - DATA\AULTV\FMDFP
 - Crown land information sourced from Land Information Management System (LIMS).
 - Tree Cover change sourced from 1:100 000 TREE CHANGE (1995) - TCH100_9095.
 - Topographic data sourced from the 1:25 000 topographic layers.

STATE GOVT. PUBLISHED MAPSHEET - TABLETOP 8323-N (VIC)
AUSLIG 1:100 000 MAPSHEET - DARGO 8323

FILE REF: T8323-4-1.PDF - VERSION 1.0 - File Produced March 12, 2000

<ul style="list-style-type: none"> Crown Land (LIMS) Extent of tree cover over Freehold land (1995) Main road - sealed Main road - unsealed Minor road - urban Whitular track / Access Road Walking Track / Trail - foot Railway Line / Spur Tamway Disused Railway Tunnel 	<ul style="list-style-type: none"> Embankment / Cutting Canalway Electricity transmission line Pipeline (other than water) Wall / Fence Mine / Quarry Landmark Area boundary State or Territory Restricted Area Coastline Coastal Flat Perennial / intermittent watercourse River flat Swamp - perennial Double line Steam Water pipeline Jetty Boat Ramp Intermediate Contour Index Contour Decimetre Depression Contour Decimetre Index Depression Contour Decimetre Chff 	<ul style="list-style-type: none"> Windbreak Buildings Windmill / Windpump Railway Station Ruins Gate Cattle grid Hallport Mine Tank (Storage) Silo Pylon Small quarry Triangulation station Rock Waterhole Sinkhole Spring Falls Dam or weir Swimming pool Bore
---	---	--

0 250 500 750 1000 1250 1500 1750 2000 2250 2500 metres

AMG ZONE 55
 MAP ANGLE: GRID NORTH
 HORIZONTAL DATUM: AUSTRALIAN GEODETIC DATUM 1986
 VERTICAL DATUM: AUSTRALIAN HEIGHT DATUM
 TRANSVERSE MERCATOR PROJECTION
 GRID INTERVAL 1000 METRES - ONE GRID SQUARE = 100 HECTARES
 GRID-MAGNETIC ANGLE FOR THE CENTRE OF THIS MAP 12° 25'

FIRE MANAGEMENT BRANCH - DEPARTMENT OF NATURAL RESOURCES AND ENVIRONMENT

FIRE MANAGEMENT BRANCH - DEPARTMENT OF NATURAL RESOURCES AND ENVIRONMENT